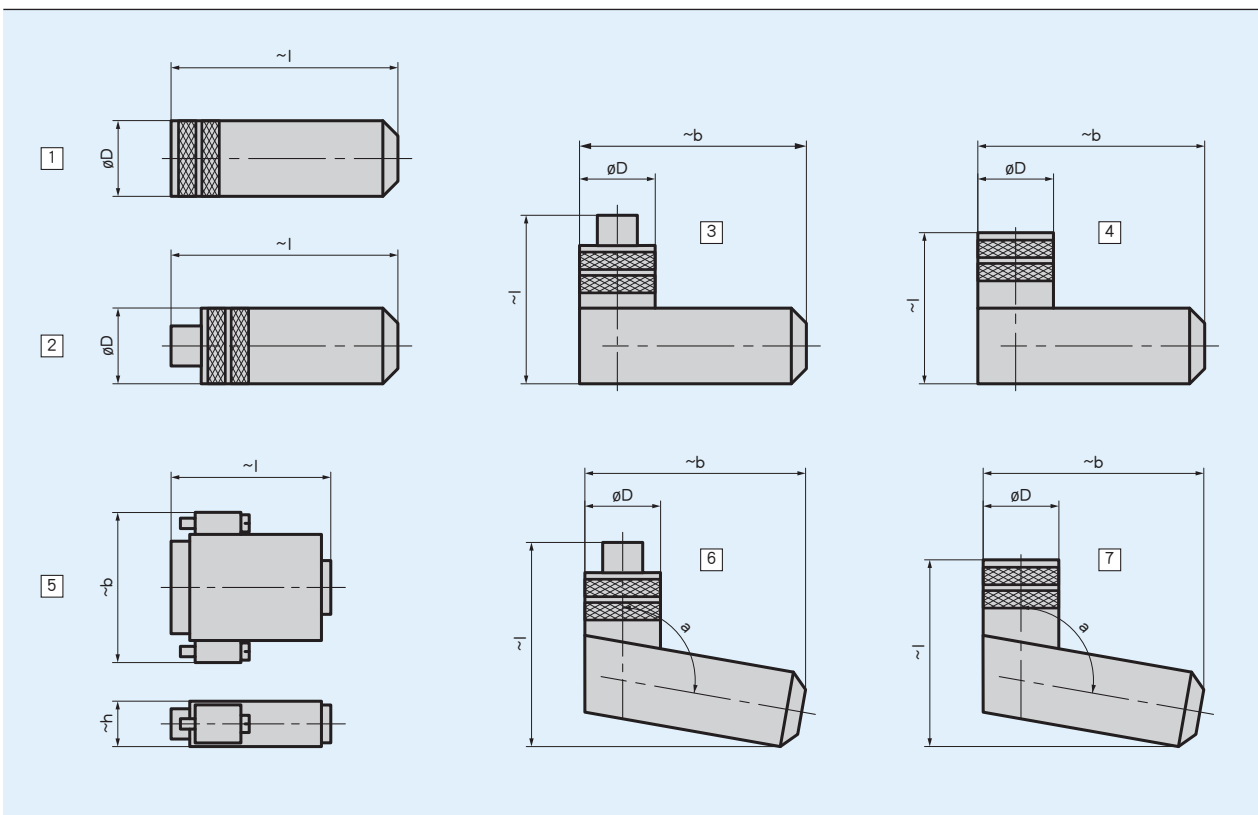
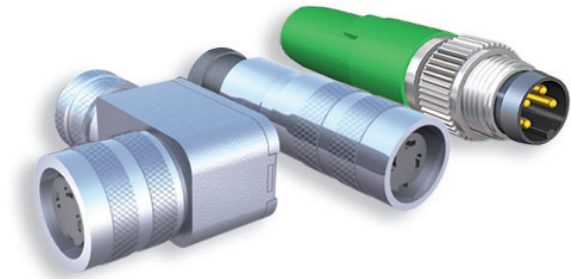


## 型材

- 配套插头，直头
- 配套插头，弯头式
- D-SUB 插头
- 总线末端插头，直头

 在拧紧状态下与设备间距增加大约3毫米



## 订购

### 订购概览

| 订单密钥        | 图 | 类型         | PIN | 名称          | 电线直径      | D    | l    | b    | h    | a    |
|-------------|---|------------|-----|-------------|-----------|------|------|------|------|------|
| 71364+71365 | 5 | D-SUB      | 9   | 销钉+外罩       | ≤8.5      |      | 35   | 31   | 15.5 |      |
| 71366+71365 | 5 | D-SUB      | 9   | 插口+外罩       | ≤8.5      |      | 35   | 31   | 15.5 |      |
| 73947+73946 | 5 | D-SUB      | 15  | 插口+外罩       | ≤8.5      |      | 42   | 40   | 15.2 |      |
| 76141       | 1 | M16        | 7   | 直连接插座       | 4 ... 6   | 18.5 | 61   |      |      |      |
| 76572       | 1 | M16        | 12  | 直连接插座       | 6 ... 8   | 18.5 | 62   |      |      |      |
| 77087       | 1 | M16        | 7   | 直连接插座       | 6 ... 8   | 18.5 | 62   |      |      |      |
| 78088       | 4 | M16        | 7   | 直角插座        | 4 ... 6   | 20   | 38   | 54   |      |      |
| 79665       | 4 | M16        | 7   | 直角插座        | 6 ... 8   | 20   | 38   | 54   |      |      |
| 79666       | 4 | M16        | 12  | 直角插座        | 6 ... 8   | 20   | 38   | 54   |      |      |
| 81351       | 1 | M9         | 8   | 直连接插座       | 3.5 ... 5 | 14   | 38   |      |      |      |
| 81363       | 4 | M16        | 3   | 直角插座        | 4 ... 6   | 20   | 38   | 54   |      |      |
| 81487       | 1 | M9         | 3   | 直连接插座       | 3.5 ... 5 | 14   | 38   |      |      |      |
| 81935       | 1 | M23        | 12  | 直连接插座       | ≤8.5      | 26   | 51.1 |      |      |      |
| 82182       | 1 | M16        | 3   | 直连接插座       | 4 ... 6   | 18.5 | 61   |      |      |      |
| 82247       | 4 | M9         | 4   | 直角插座        | 3.5 ... 5 | 14   | 30   | 30.5 |      |      |
| 82366       | 4 | M9         | 3   | 直角插座        | 3.5 ... 5 | 14   | 30   | 30.5 |      |      |
| 82804       | 7 | M12 B-cod. | 5   | 弯角插座        | 4 ... 8   | 19   | 48   | 41   |      | 100° |
| 82805       | 6 | M12 B-cod. | 5   | 弯角销钉        | 4 ... 8   | 19   | 50   | 41   |      | 100° |
| 82815       | 2 | M12 A-cod. | 5   | 总线终端插头(CAN) |           | 14.5 | 55   |      |      |      |
| 82816       | 2 | M12 B-cod. | 5   | 总线终端插头(PB)  |           | 14.2 | 44   |      |      |      |
| 83006       | 7 | M12 A-cod. | 5   | 弯角插座        | 4 ... 8   | 19   | 48   | 41   |      | 100° |
| 83007       | 6 | M12 A-cod. | 5   | 弯角销钉        | 4 ... 8   | 19   | 50   | 41   |      | 100° |
| 83091       | 7 | M12 A-cod. | 4   | 直角插座        | 4 ... 8   | 19   | 48   | 41   |      | 100° |
| 83419       | 1 | M12 A-cod. | 4   | 直连接插座       | 4 ... 6   | 20   | 54   |      |      |      |
| 83447       | 1 | M9         | 4   | 直连接插座       | 3.5 ... 5 | 14   | 38   |      |      |      |
| 83525       | 1 | M12 A-cod. | 8   | 直连接插座       | 6 ... 8   | 20   | 57   |      |      |      |
| 83526       | 1 | M12 A-cod. | 4   | 直连接插座       | 6 ... 8   | 20   | 57   |      |      |      |
| 83527       | 2 | M12 A-cod. | 8   | 销钉          | 6 ... 8   | 20   | 62   |      |      |      |
| 83991       | 1 | M12 B-cod. | 5   | 直连接插座       | 6 ... 8   | 20   | 57   |      |      |      |
| 83992       | 2 | M12 B-cod. | 5   | 销钉          | 6 ... 8   | 20   | 62   |      |      |      |
| 84109       | 1 | M12 A-cod. | 5   | 直连接插座       | 6 ... 8   | 20   | 57   |      |      |      |
| 84209       | 1 | M8         | 4   | 直连接插座       | 3.5 ... 5 | 12   | 43   |      |      |      |
| 84210       | 2 | M8         | 4   | 销钉          | 3.5 ... 5 | 12   | 50   |      |      |      |
| 84732       | 2 | M12 A-cod. | 5   | 销钉          | 6 ... 8   | 20   | 62   |      |      |      |
| 85057       | 1 | M16        | 3   | 直连接插座       | 6 ... 8   | 18.5 | 62   |      |      |      |
| 85058       | 4 | M16        | 3   | 直角插座        | 6 ... 8   | 20   | 38   | 54   |      |      |
| 85277       | 1 | M12 A-cod. | 12  | 直连接插座       | 6 ... 8   | 20   | 57   |      |      |      |
| 85278       | 4 | M12 A-cod. | 12  | 直角插座        | 6 ... 8   | 20   | 38   | 54   |      |      |
| 87599       | 7 | M12 A-cod. | 8   | 弯角插座        | 4 ... 8   | 19   | 48   | 41   |      | 100° |
| 87600       | 3 | M12 D-cod. | 4   | 直角销钉        | 6 ... 8   | 20   | 42   | 54   |      |      |
| 87601       | 2 | M12 D-cod. | 4   | 销钉          | 6 ... 8   | 20   | 63   |      |      |      |
| 89115       | 1 | M12 T-cod. | 4   | 直连接插座       | 5 ... 8   | 20   | 65   |      |      |      |
| BAS-0005    | 2 | M8         | 4   | 总线终端插头      |           | 12   | 45   |      |      |      |

### 订购号



供货范围: 配套插头